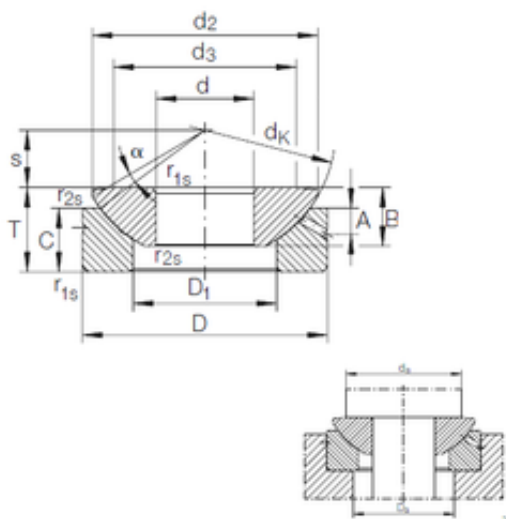




LINK BELT BEARING LTD

45 mm x 120 mm x 31 mm 45 mm x 120 mm x 31 mm INA GE 45 AX GERMANY Bearing 50X90X62.7



Bearing No. GE 45 AX

Size	45x120x36.5 mm
Bore Diameter	45 mm
Outer Diameter	120 mm
Width	36,5 mm
d	45 mm
D	120 mm
T	36,5 mm
B	31 mm
C	25 mm
d2	112 mm
d3	89 mm
dk	130 mm
r1 min.	1 mm
r2 min.	0,3 mm
A	11 mm
D1	68 mm
S	27,5 mm
da max	89 mm
Da min	74 mm
Angle	6 °
Weight	2,5 Kg
Basic dynamic load rating (C)	486 kN

GE 45 AX Bearing 2D drawings and 3D CAD models